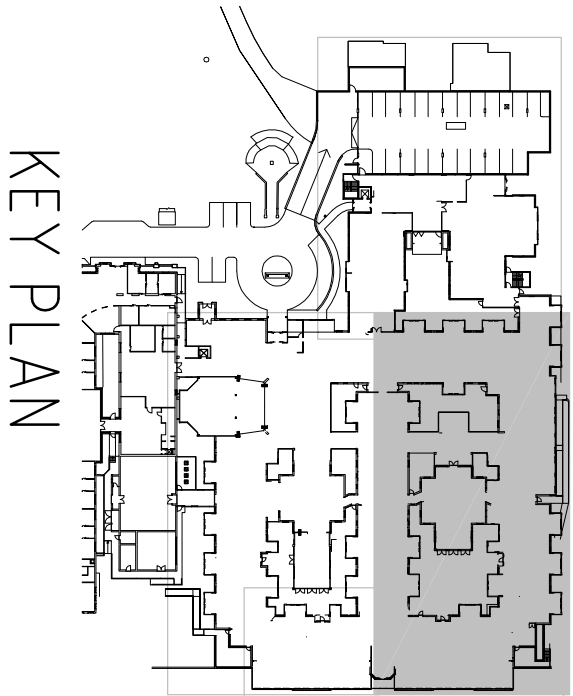
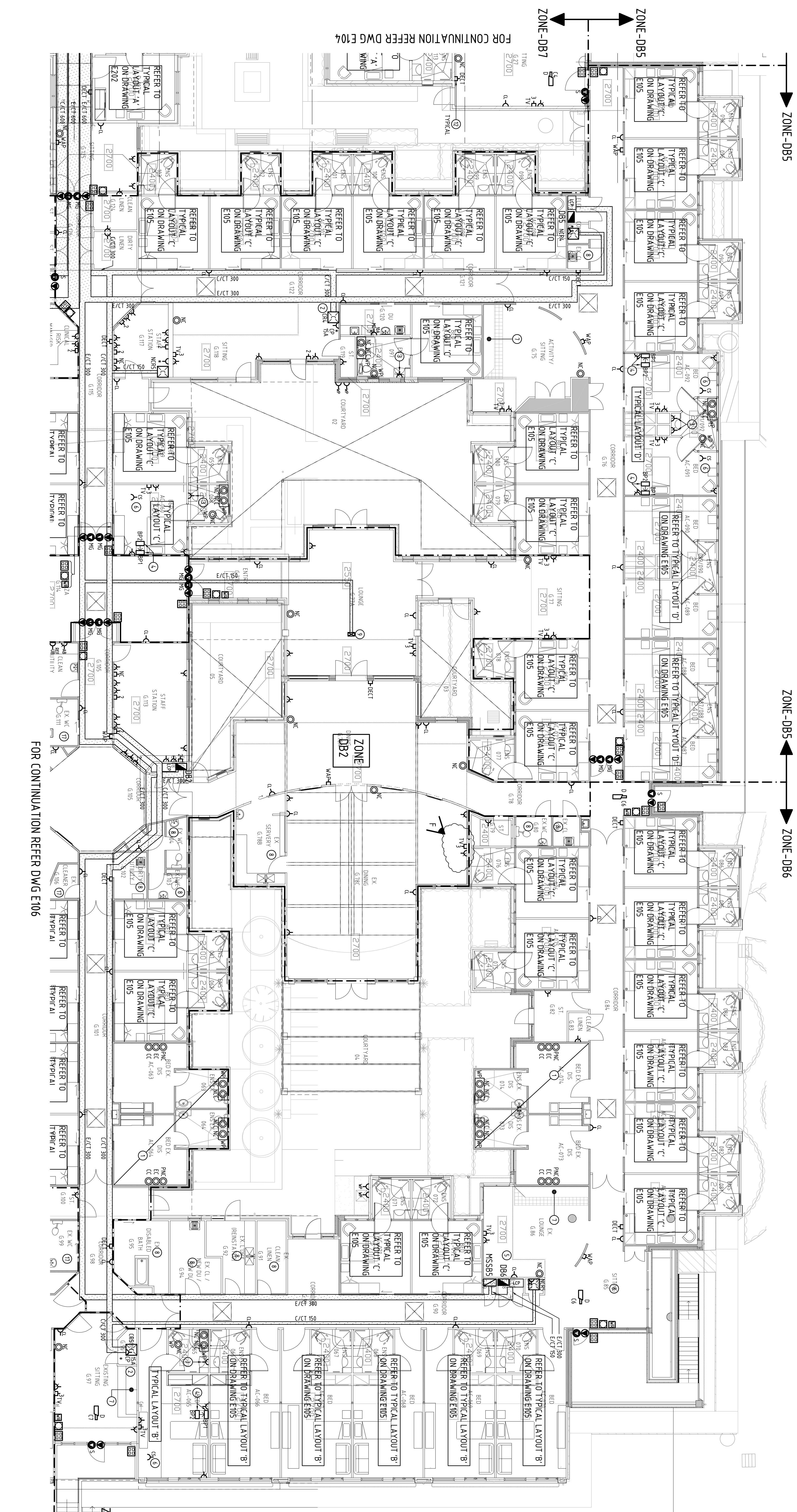


GENERAL NOTES

- REFER TO DRAWING E04 FOR APPLICABLE NOTES AND ABBREVIATIONS.
- FOR THE EXISTING FACILITY STAGES 2 AND 3, ALLOW IN THE TENDER AN ADDITIONAL 12-0FF DOUBLE SWITCHED SOCKET OUTLETS AND 12-0FF DATA OUTLETS INCLUDING WIRING AND CONNECTIONS FOR SPECIALIST SERVICES AND FACILITIES I.E. NURSE CALL, PHONO AND AUDIO VISUAL SYSTEMS.
- TENDERERS SHALL VISIT THE SITE TO OBTAIN THE SCOP FOR REPAIRING AND RECONNECTING EXISTING ELECTRICAL SERVICES IN EXISTING ROOMS AND ASSOCIATED WORKS AND COSTS IN THE TENDER.

POWER LAYOUT REFERENCE NOTES

- EXISTING ELECTRICAL SERVICES TO REMAIN. PROVIDE AND CONNECT NEW NURSE CALL POINTS AS SHOWN.
- REFER TO SCHEMATIC ON DRAWING E05 AND SPECIFICATION FOR THE FITOUT AND TERMINATION OF THE COMMS BACK. PROVIDE A 15A, 230V SINGLE CAPTIVE TYPE SWITCHED SOCKET OUTLET SURFACE WALL MOUNTED ADJACENT TO THE BACK.
- PROVIDE DOUBLE SWITCHED SOCKET OUTLET INSTALLED IN CLOSETBOARD.
- BED SIDE SERVICES PANEL BPT WITH PANEL BPT BELOW. REFER TO PANEL DE IALS ON DRAWING E201.
- RECONNECT THE EXISTING LIGHTING AND POWER SUB-FACILITIES TO THE P AND ROOM AND GARAGE BELOW GROUND LEVEL TO DISTRIBUTION BOARD DB6. PROVIDE AND CONNECT 4-0FF 20A, 3-PHASE MCB'S AND 4-0FF 100A RCB'S IN DB6. PROVIDE AND CONNECT ADDITIONAL SUB-DISCRETS AS REQUIRED.
- GP IN CEILING SPACE FOR AIR CONDITIONING IN DOOR UNIT. FINAL LOCATION OF OUTLET TO BE CO-ORDINATED WITH THE MECHANICAL SERVICES CONTRACTOR TO CONNECT TO POWER SUBDISCRETS FOR BEDROOM.
- EXISTING GP'S SHALL BE REPLACED WITH NEW GP'S IN THEIR PRESENT POSITIONS AND RECONNECTED USING NEW WIRING TO THE RESPECTIVE NEW DB'S AND DB6'S.
- EXISTING GP'S, POWER CONNECTIONS, VOICE/DATA OUTLETS AND NURSE CALL POINTS TO BE REPLACED WITH NEW GP'S IN THEIR PRESENT POSITIONS AND RECONNECTED USING NEW WIRING TO THE RESPECTIVE NEW DB'S AND DB6'S.
- REPAIRATION IN ROOM ABOVE FOR SUBMAIN CABLES TO MECHANICAL SERVICES SWITCH BOARD MS587 AND HYDRAULIC CONTROL PANEL WP73 ON TOP OF BED ROOM DB6. PANELS AND FINAL CONNECTIONS BY OTHER APPROPRIATE SERVICES CONTRACTORS.



Revised	Drawn	Checked
1	2	3
4	5	6
7	8	9
10	11	12
13	14	15
16	17	18
19	20	21
22	23	24
25	26	27
28	29	30
31	32	33
34	35	36
37	38	39
40	41	42
43	44	45
46	47	48
49	50	51
52	53	54
55	56	57
58	59	60
61	62	63
64	65	66
67	68	69
70	71	72
73	74	75
76	77	78
79	80	81
82	83	84
85	86	87
88	89	90
91	92	93
94	95	96
97	98	99
100	101	102

CONSTRUCTION ISSUE

THESE DRAWINGS HAVE BEEN MARKED "CONSTRUCTION ISSUE" ON THE UNDERSIDING THAT THEY ARE TO BE USED AS THE BASIS FOR THE COMPLEMENT OF THE SUB CONTRACTOR'S SHOP DRAWING PROCESS.

ThomsonAdsett

Level 1
442 Bourke Street
South Melbourne, Victoria 3205
Australia
T: (03) 9585 9900 F: (03) 9585 9999
www.thomsonadsett.com

Waterman

Waterman A&P Pty Ltd
40 Park Street, South Melbourne, Victoria 3205 Australia
T: (03) 9585 9900 F: (03) 9585 9999
www.waterman.com.au

ASSISI CENTRE
EXISTING AGED CARE BUILDING &
NEW RETIREMENT ACCOMMODATION
230 ROSANNA RD, ROSANNA

POWER, COMMUNICATIONS
& ACCESS CONTROLS LAYOUT

Drawn: JG

Checked: JG

Scale: 1:100

Date: 28/12/2014

Job No: 4935

Revision: F